

Who Are We?

Independent Consultants from the Eastern half of Kansas with diverse educational experiences and areas of expertise ready to serve schools in a collaborative capacity. **We have recently added several new consultants.** This list is available on the website and is continually being updated as the network expands.

Vicki Bechard is the owner and point person. She has a variety of K-12 and university experience working in and with schools in Eastern Kansas as a teacher, school improvement leader, and administrator; provider of professional learning, educational consultant, and adjunct university instructor.

Consider instructional support or facilitated small group collaborations to meet faculty needs instead of just workshops or one time professional learning sessions.

How Do I Connect with this Professional Network?

When your school contacts Vicki, she will help you with your teaching and learning needs personally or by connecting you with other experienced and highly qualified professionals who may be able to provide the services that will be the most beneficial to your school or district.

www.teachingandlearningnetwork.com

Teaching &
Learning
Consulting
Network, LLC



Let us help your school improve teaching & learning!

Contact Information:

Vicki Bechard

Office: 913-796-6241

Cell: 785-393-1495

Email:

vickib@teachingandlearningnetwork.com

Website:

www.teachingandlearningnetwork.com

**TEACHING
&
LEARNING
CONSULTING
Network, LLC**



Supporting the quest to improve teaching and learning

Find us on



Or on the Web at

www.teachingandlearningnetwork.com

How Can We Help?

Begin with effective
Professional Learning



What changes impact you?

- Kansas College & Career Ready Standards (KCCRS)
- Curriculum Planning & Delivery
- Supporting Teaching & Learning
- Educator Evaluation Systems
- Professional Learning design & delivery (*create a learning community*)
- Instructional coaching
- Collecting & Analyzing Building Data (walkthroughs)
- Mentoring

Professional Learning:

Topics include, but are
not limited to...



- KCCRS Instructional strategies
- Curriculum Design for KCCRS
- Effective Instructional Strategies
- Differentiated Instruction
- Teaching Students in Poverty
- Student Engagement
- Classroom Management
- Effective Collaboration (PLCs)
- Collecting & Analyzing Building Data

Have something else in mind?
Just ask! We are here to help!

Availability

At Your School

Single Days:

Full day, half day, or
hourly increments

Multiple Days:

Set up regular
meeting dates (ex: monthly) to work with
staff through coaching, mentoring,
collecting building data, leading book
studies or other activities that assist the
school in improving teaching and learning.



Teaching & Learning Consulting Network

*Helping schools on the journey to
improved teaching and learning.*

Workshops/College Courses



- **Summer 2015: June 15-25**
(Location: McLouth High School)
- *Weekend school year dates TBA*
- **College Credit** available through
Baker University

*For more information,
check out our website:*

www.teachingandlearningnetwork.com

Effective & Affordable

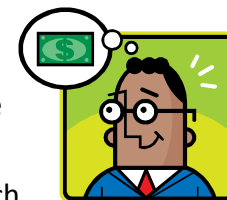
Quality professional
learning that is relevant,
timely, and produces
results is an investment in
the success of your school.



- *Affordable, professional* educational services
- Fill voids created by budget cuts
- *Personalized attention* that may not be found with expensive consortium memberships

Costs

Each consultant has
his/her own *affordable*
fee structure that will be
determined and
negotiated based on each
individual school's needs in terms of time
and content commitment.



*The fee will typically include a daily stipend
plus expenses. Scheduling multiple dates may
reduce the per diem cost. See our website for
more information.*

Contact **Vicki Bechard** to obtain fee
information at 913-796-6241 or email:
vickib@teachingandlearningnetwork.com